



Ford Ranger FMINT20 Fitting Instructions



Please thoroughly read through and familiarise yourself with these instructions in their entirety prior to beginning any part of the installation process of any component. Please also ensure the vehicle and engine has cooled down sufficiently to avoid risking possible skin burns or other injury.

TOOLS NEEDED:

10mm ratchet and drive

Pozi Drive screwdriver

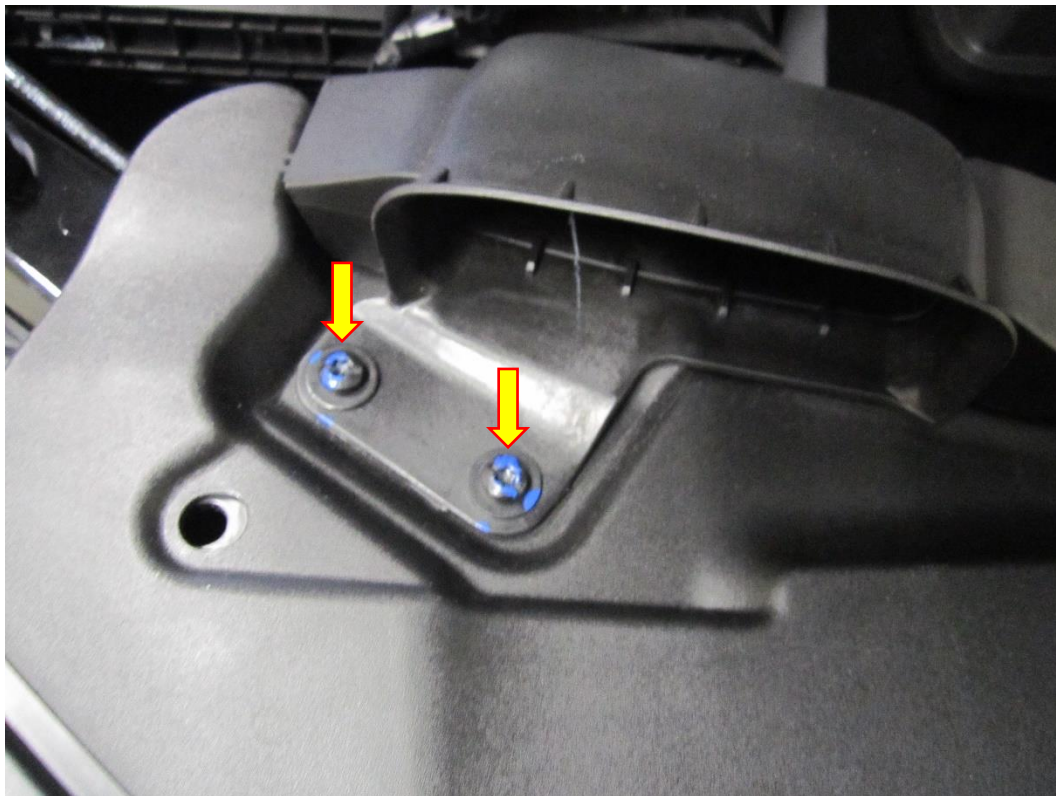
T30 Torx Driver

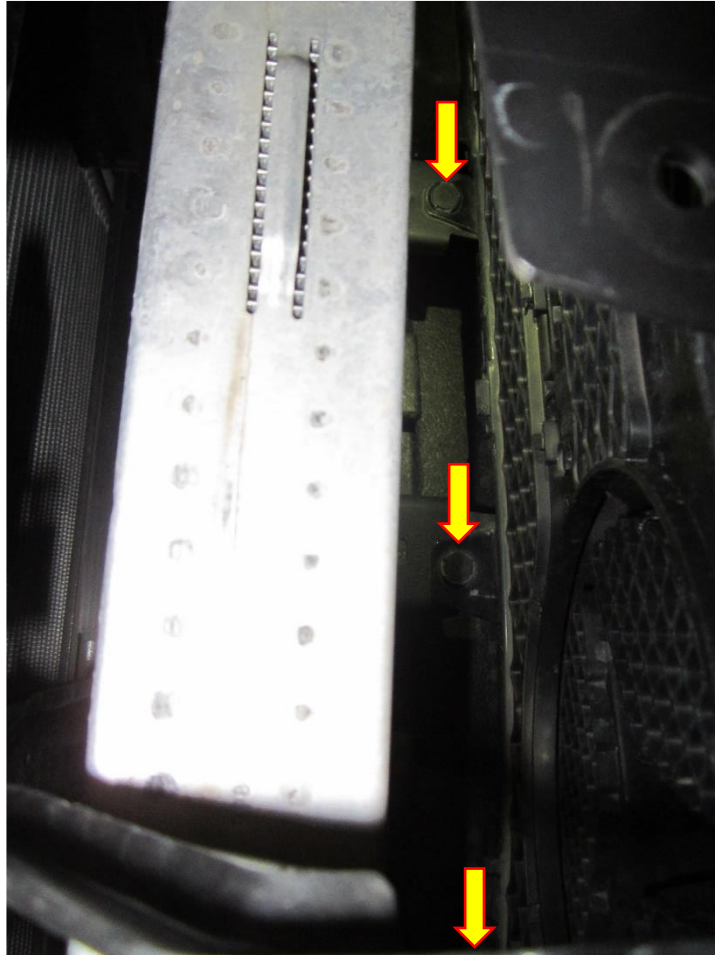
Flat blade screwdriver/trim removal tool

1. Open the bonnet and locate the five plastic fasteners attaching the slam panel cover to the vehicle. Use a flat blade screwdriver or trim removal tool to release these fasteners.

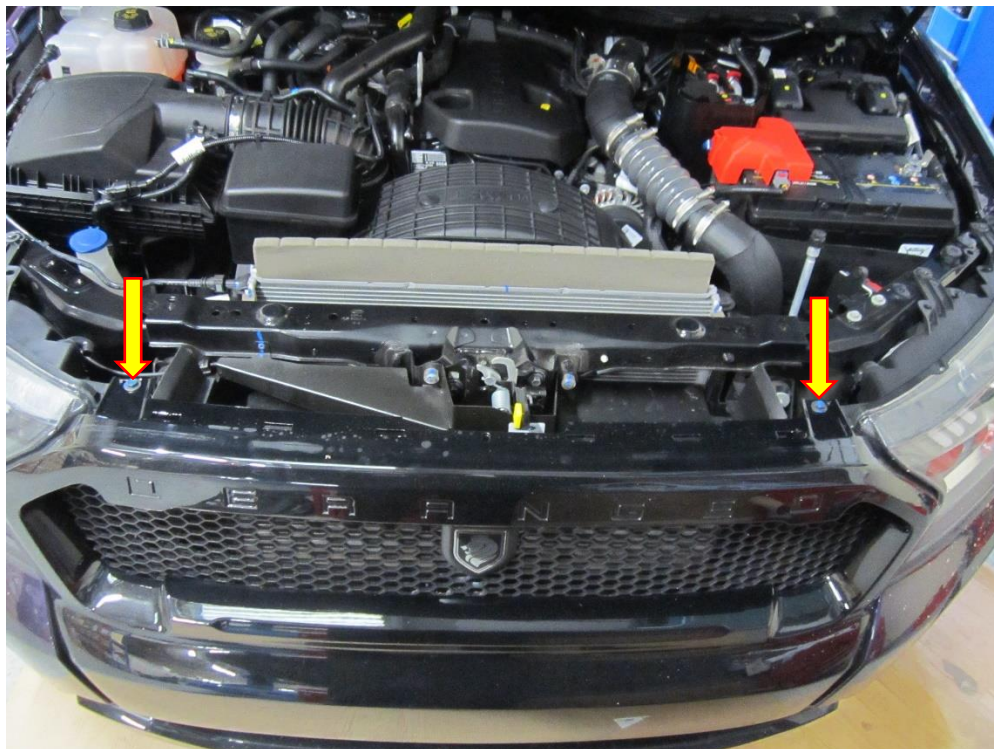


2. Use a T30 Torx drive to remove the two fasteners which attach the air scoop to the slam panel. You will now be able to remove the slam panel cover completely.





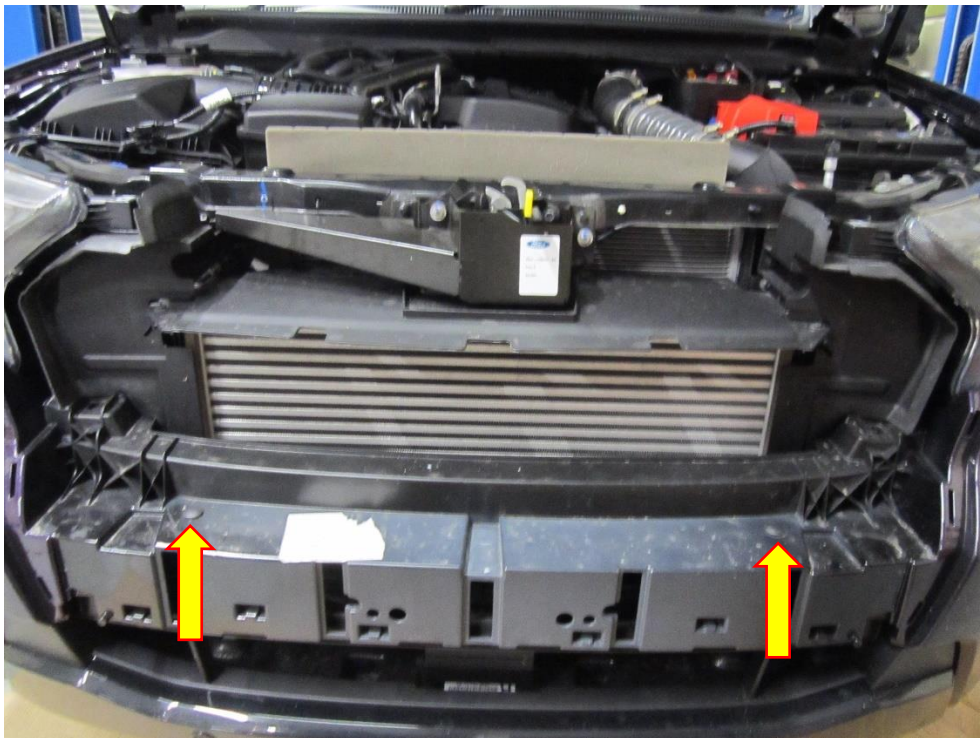
3. Using a 10mm socket and ratchet remove the two M6 fasteners attaching the top of the grille to headlights.



4. Locate and use a Pozi drive screwdriver to remove the two fasteners attaching the bottom of the grill. The grill will now come away from the bumper.



5. Remove the two plastic fasteners in the picture below with the aid of a trim removal tool or a flat blade screwdriver.



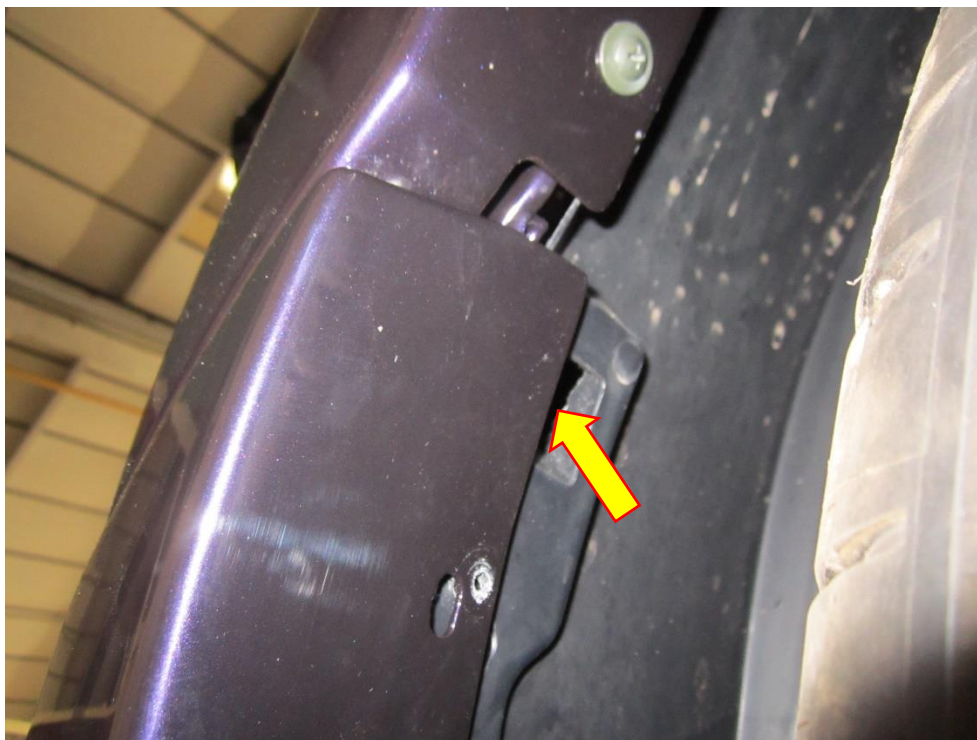
- Using a pozi drive screwdriver to remove the four fasteners attaching the inner arch of the bumper to the splash guard.. This is the same for both sides.



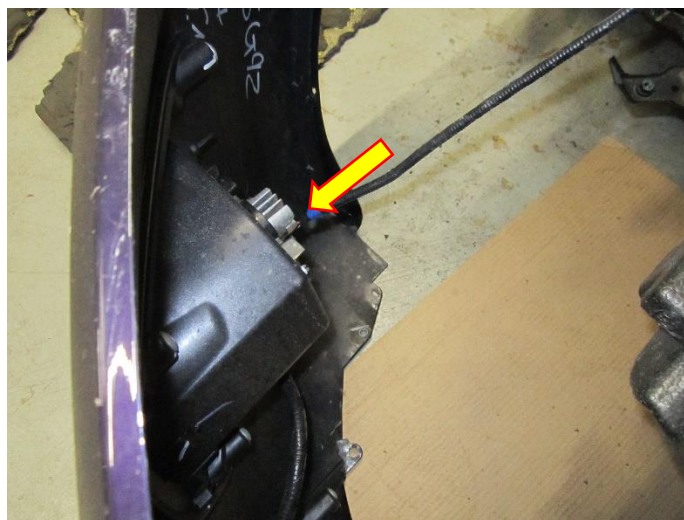
- Locate and remove the four fasteners at underside of the bumper.



8. Remove the fastener from the inside of the splash guard attaching the bumper to the wing, do this on both sides. The bumper should now pull away from the vehicle.



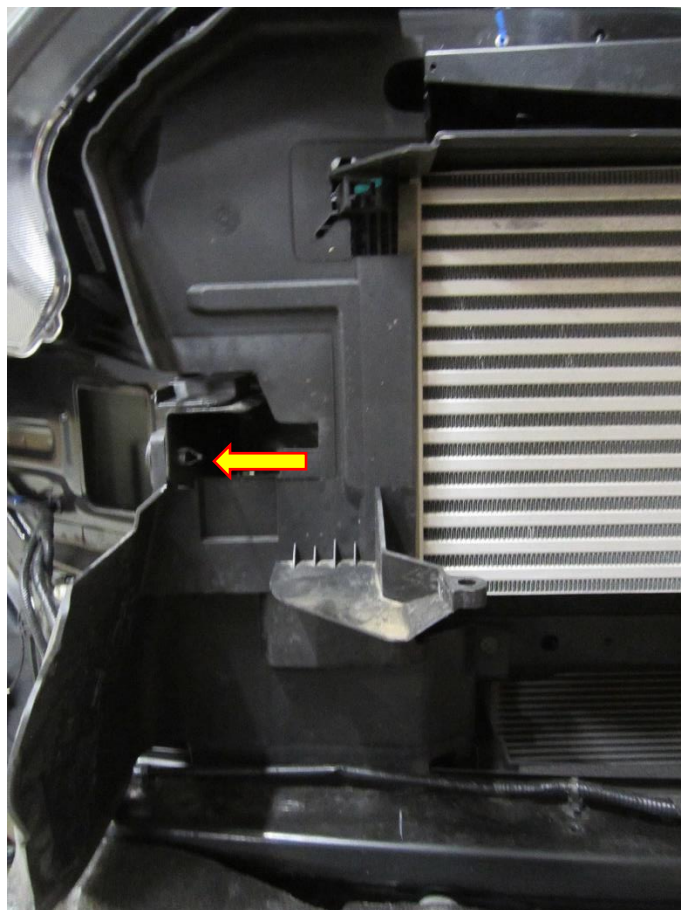
9. With the bumper now free from the vehicle there are three plugs which need unfastening. Simply press in the tab and pull to release them.



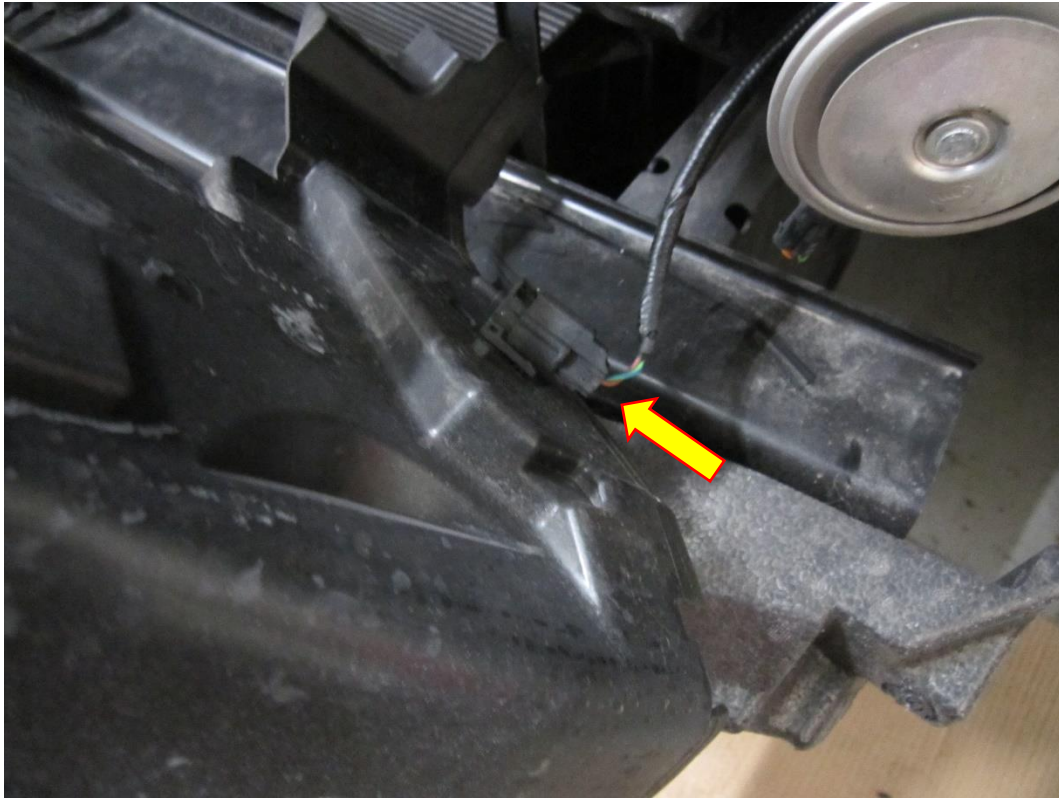
10. Using a 10mm socket and ratchet remove the four M6 fasteners attaching the plastic shrouds each side of the intercooler.



Use a flat blade screwdriver or trim removal tool to remove the plastic fasteners in the middle of each shroud



11. Un-plug the temperature sensor attached to the plastic shroud.



12. Remove the M6 nut and washer securing the intercooler to the vehicle. Use a 10mm socket and ratchet to do this.



13. Un-clip both boost hoses going to the intercooler, with the use of a flat blade screwdriver slide the retaining clip down then pull the boost pipe from the intercooler.



14. The intercooler will now come away from the vehicle. Take the Forge intercooler and follow steps 1-13 in reverse order to install it, once complete take your vehicle for a test drive and enjoy the added performance from your Forge Motorsport product.

For a full range of performance products for your vehicle.

If you have any questions or concerns about this product or anything else, please feel free to contact your local or preferred Forge Motorsport Dealer/Installer or you may contact us directly.



Important Information Regarding Your New Forge Cooling Product

Thank you for purchasing a Forge Motorsport cooling product. You now have a product that simply leaves the competition behind – made in Great Britain, with a lifetime warranty. All you need to do now is install and maintain the product correctly to maximise its full potential.

All Forge products are tested before leaving our facility to ensure you 100% satisfaction and reliability.

General information and care for your Forge cooling product:

- On installing your intercooler/radiator, be sure that all hose clamps and fittings are tightened to prevent any leakage.
- Ensure that the intercooler/radiator and the associated plumbing components are not rubbing on any body parts. This can cause premature failure and warranty invalidation from Forge.
- Do not use any car cleaning products, particularly traffic film remover solutions or shampoos to clean your intercooler, radiator or oil cooler. The use of these products can damage the Forge cooling systems and invalidate your warranty.
- Any cleaning should be done with hot soapy water and well rinsed.
- We recommend that you should inspect your product on a regular basis for bent and/or crushed fins. Any bent fins should be carefully straightened to allow ambient air to pass through the core face.
- At the time of installing your Forge product, an approved coolant must be used and added to the coolant system. Be sure you never mix coolant and always use distilled water.
- On Forge Oil Coolers, please ensure all hose clamps and fixings are tightened and secured to prevent leakage.
- Do not exceed 9 bar (130 psi) rating on your oil cooler.

What should you do if a fault develops?

If you suspect that you have an issue, you should take your vehicle back to where the installation of your Forge product was carried out, or to a suitable and qualified tuner for investigation of the problem.

If you suspect that the problem has occurred due to faulty manufacture, please contact your Forge dealer or Forge Motorsport UK, Forge Motorsport USA or Forge Motorsport Asia, depending on your geographical location, to discuss the issue.

How to get the Best from your Forge cooling products

- Ensure the fitting is carried out by a reputable and competent garage, tuner, or mechanic.
- Carry out regular visual checks, inspections, and servicing.
- Only fit the Forge cooling product for the application that it was designed for.
- Do not fit other parts that could detrimentally affect the efficiency of your Forge cooling product.